

You're composing your first high-gloss, magazine-style section for weddings. You find the perfect photo to use for a cover design, but don't think you'll be able to enlarge it without a visible loss of sharpness. You've been given the project of a series of full-page campaign ads that will require a cohesive collection of people photos.

There are many times when higher resolution photos would do more than come in handy, they'll help make the project successful. Now **300 dpi photos** are available in the *Images Library of MetroCreativeConnection*. In addition to the regular 170 dpi resolution photos, 300 dpi photos are readily downloadable in the same *Images Library*.

Here's how it works:

Perform any search for photos using keywords, qualifier selections from the pulldown menus, or any combination thereof, as usual. In the search results window that appears, any photo that is available in 300 dpi will display a high-res "circle H" below the "i" information button, to the left of the thumbnail image. Click the "H" and a selection indicator will appear. At that point you can place it into a *Project* (by clicking *Add to Project* or create a *New Project*) or download the high-res photo immediately by clicking the *Download* button. Select the "H" button on several files to download more than one at a time, the same way you would download the regular resolution images.

The second method of accessing 300 dpi photos is to limit your search. Click the pulldown *Resolution* qualifier menu and select "high-res" and any search you perform — through keywords, *Issue Date* or combination search — will only return photos in the *Results* window that are high-res JPEGs. Choose the *high-res Selector* button on your choice of photos and download.

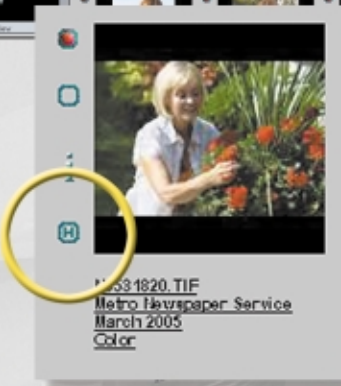
To facilitate quicker online transfer times, high-res photos will download as 300 dpi RGB JPEG files. In order to prepare them for printing, just open them in Adobe Photoshop® and resave as CMYK TIFF for placement into your document.

The high-res photo count launched with several thousand photos, on a wide variety of subjects, selected from June 2003 through the present issues of both *Metro Newspaper Service* and *Classified Dynamics*. It will continue to grow each month as selected items are added. Subscribers have access within the bounds of their subscriptions.

High resolution 300 dpi photos are the latest example of how *MetroCreativeConnection* is continuing to grow as your needs grow. Call Metro's Customer Service at 1-800-223-1600 for information on adding this functionality to your *MCC Library* resources. [Try it!](#)



High res Selector button



Resolution qualifier to limit search only to photos in high res

